



MARY BLACK  
FOUNDATION

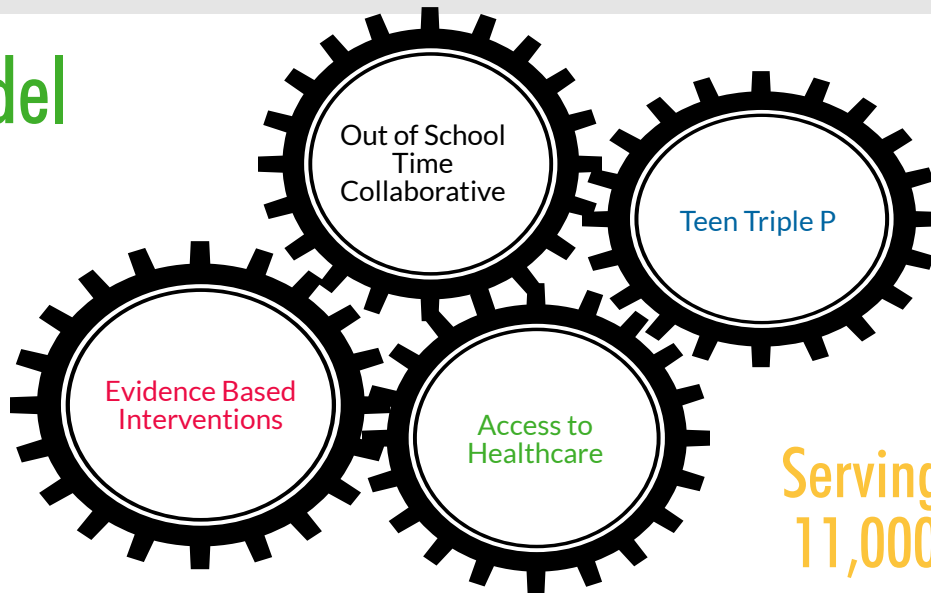
## Preventing Teen Pregnancy Improving Adolescent Outcomes

Working to improve the lives of teens by preventing early child bearing and increasing research based policies, practices and programming to improve adolescent health and wellness.

# Under the leadership of the Community and Youth Advisory Boards

Since 2010, Teen Pregnancies are at an all time low, 50% reduction county wide and 60% reduction in targeted areas with disparities eliminated among all teens. Spartanburg is focused on vulnerable teens, engaged in systems and at high risk for negative outcomes beyond teen pregnancy, in schools, community and medical settings. Looking at co-occurrences and issues impacting overall health and wellness; mental health, substance use, sexual health, educational services, workforce development and healthy relationships.

## Connect Model



Serving annually  
11,000+ Youth

Across All Components: Online Resource Guide for Teens and Parents, Social Norm Campaign to Empower Youth, and Referral System to authentically connect vulnerable youth to services



for positive  
youth outcomes

Connect's role is to increase evidence based practice in adolescent health by convening partners to understand and improve systems, build capacity of youth-serving providers, and ensure access and awareness of youth-serving providers in Spartanburg.

Contact: Polly Edwards Padgett  
ppadgett@maryblackfoundation.org  
www.connectspartanburg.org