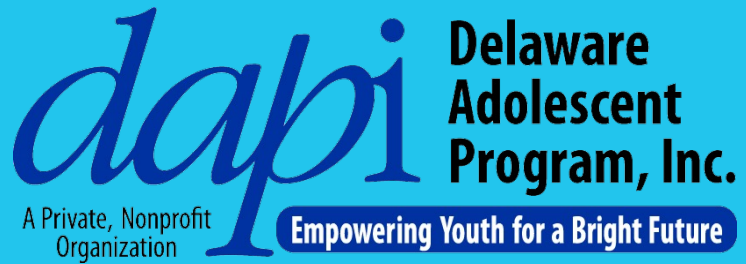


dapi

A Private, Nonprofit
Organization

**Delaware
Adolescent
Program, Inc.**

Empowering Youth for a Bright Future



MISSION STATEMENT

The Delaware Adolescent Program, Inc. (DAPI) provides standards-based education for pregnant and parenting teens with unique outreach, mentoring and supportive services promoting empowerment and self-sufficiency.

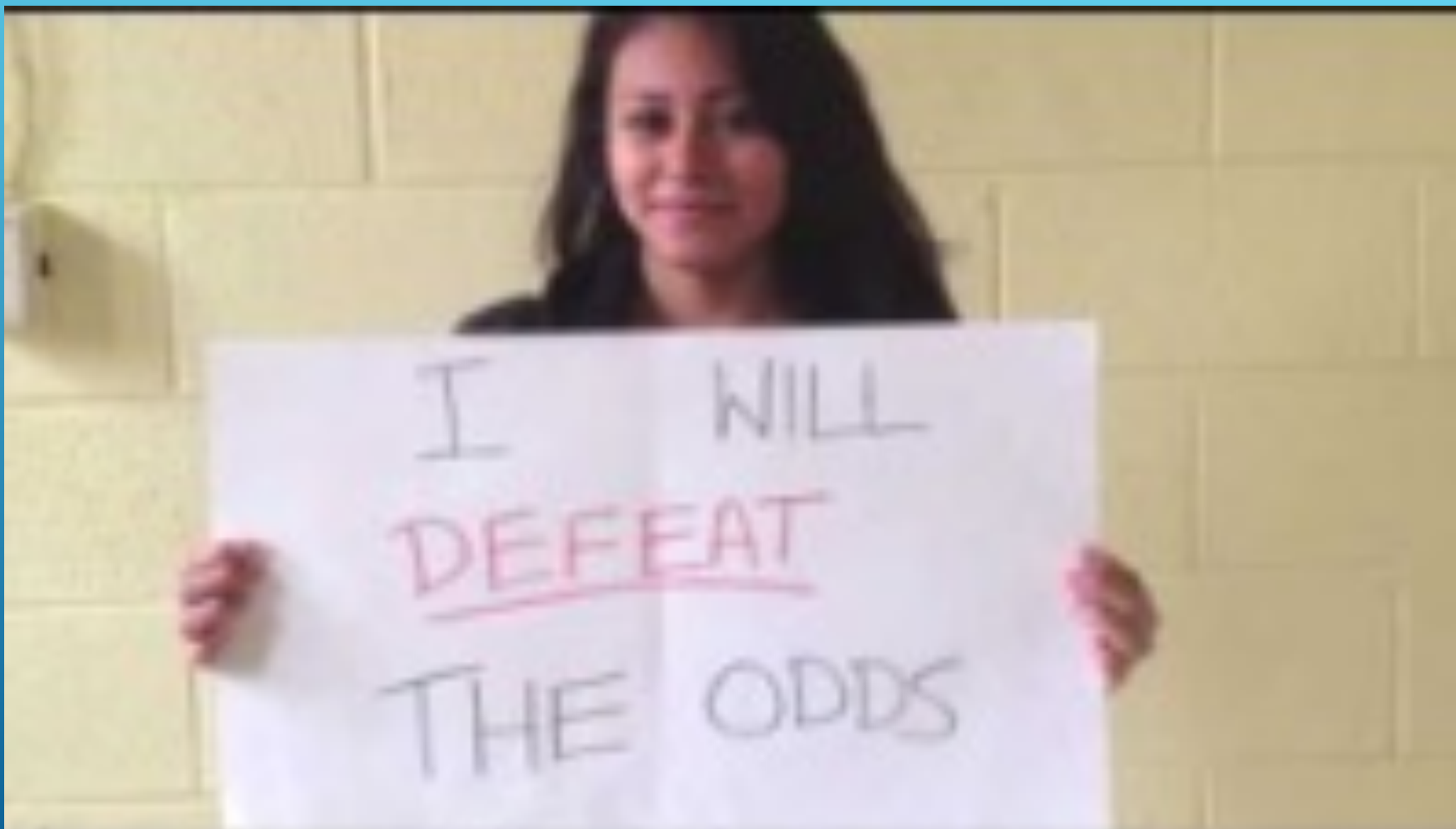
VISION STATEMENT

To empower pregnant and parenting teens to achieve their dreams for themselves and their children.



- Founded in 1968 – Incorporated in 1969
- Started in New Castle County to afford pregnant teenagers a means by which to continue their education and receive pre-natal care.
- Became a national model
- Expanded across the state and serves hundreds of girls each year in our New Castle, Kent and Sussex County centers.
- Many adolescent girls and their families still prefer the intimate environment and personalized attention that the Delaware Adolescent Program, Inc. provides.

DAPI HISTORY





SPONSORS & DONORS

Funding for our organization is provided in part by state and government grants. Additionally, DAPI has received funding from a variety of foundations and corporations nationwide. However the generosity of individuals.



Executive Office



Located within New Castle
County Center
Executive Director:
Dr. Doris Griffin

Executive
Assistant/Development
Coordinator:
Inez Self-Simmons

Office Manager:
Cheryl Hollingsworth

New Castle County Center



New Castle
925 Bear Corbitt Rd,
Bear, DE 19701
Center Director:
Leonette Collins, Ph.D

Kent County Center



Kent
185 South Street
Camden, DE 19934
Center Director:
Maleka Pettyjohn

Sussex County Center



Sussex
26351 Patriots Way
Georgetown, DE
19947
Center Director:
Kim Wright



COMMON
CORE



BLENDED
LEARNING

- COMMON CORE CURRICULUM WITH A BLENDED LEARNING STRATEGIES
- TECHNOLOGY AND SOFTWARE AVAILABLE TO STUDENTS
- CAREER PATHWAYS
- SMALLER CLASS SIZE CLASSROOM
- ONLINE LEARNING COVID RESPONSE
- MATERNAL HEALTH CURRICULUM

DAPI NURSES

Rian Moore
New Castle County

Kimberly Stewart
Kent County

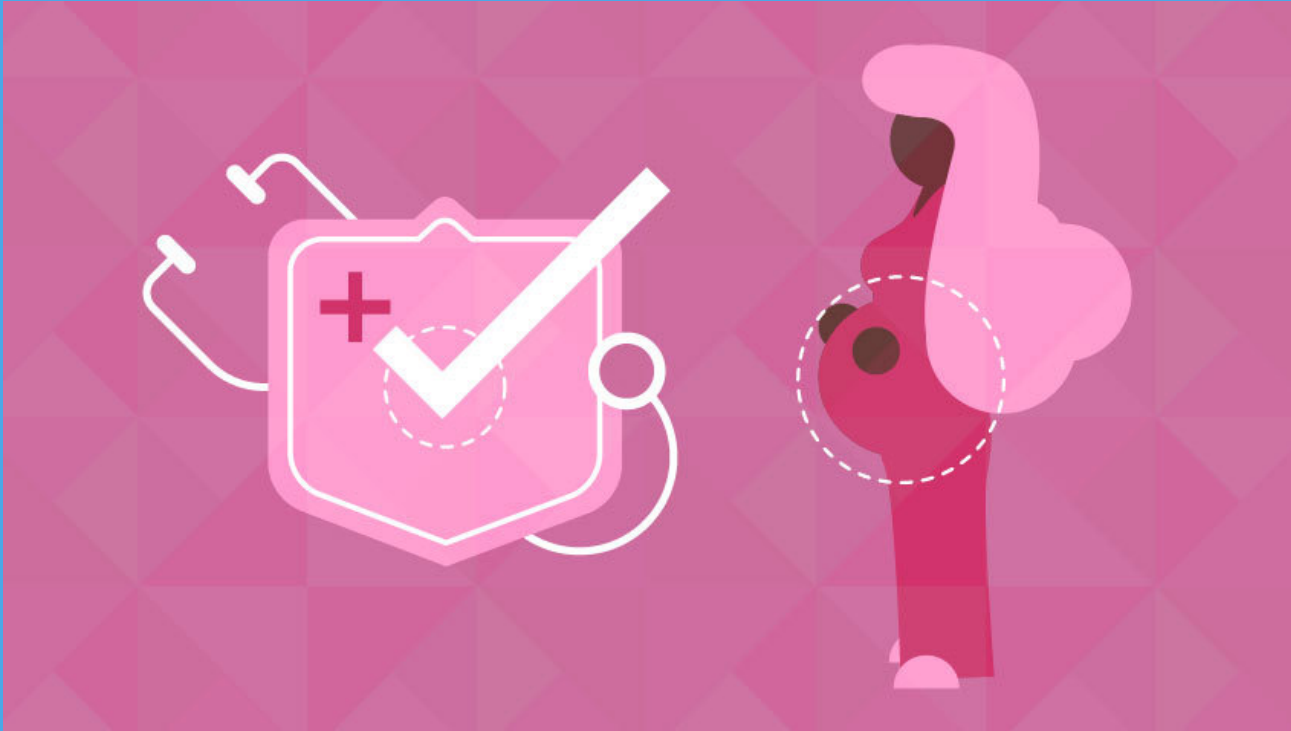
Beth Weatherby
Sussex County



Medical Case Management

- Choosing a Pediatrician
- Choosing Childcare
- Healthy Relationships
- Self-Esteem
- Positive Parenting
- Nutrition
- Substance Abuse
- Post Partum Depression

Maternal Health Curriculum



- Understanding Pregnancy
- Labor and Delivery
- Newborn Care
- Adjusting to life as a Teen Parent
- STD Awareness
- Postpartum Depression
- Safe Sex/Birth Control
- Healthy Relationships
- Safe Sleeping
- Physical Development
- Intellectual Development

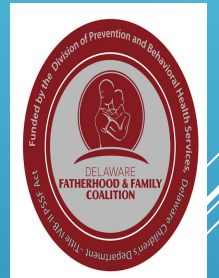
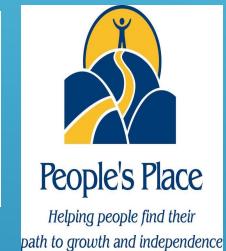
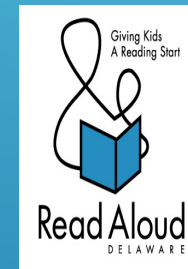
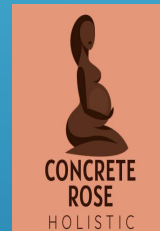


GROUP TOPICS

- ▶ Relationship Education
- ▶ Health & Wellness
- ▶ Parenting
- ▶ College Readiness
- ▶ Trauma Informed Care

GROUP FACILITATORS

We partner with many local, statewide and national organizations from grassroots to health insurance companies and universities.

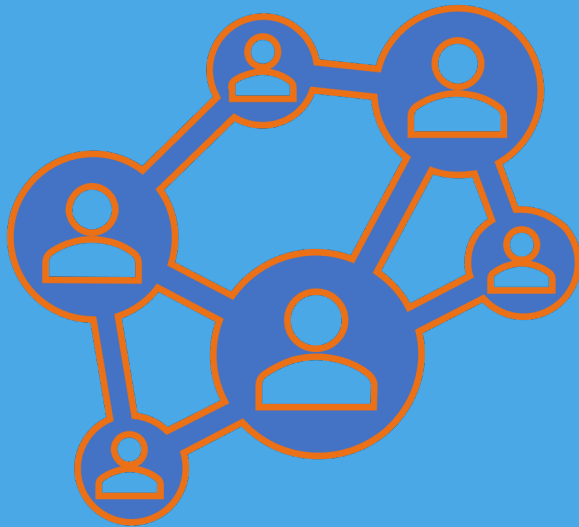


STUDENT SERVICES COORDINATORS

- ▶ Nurses partner with Student Services Coordinators (SSCs) to provide services to our in-house students as well students who are not a part of our traditional program.

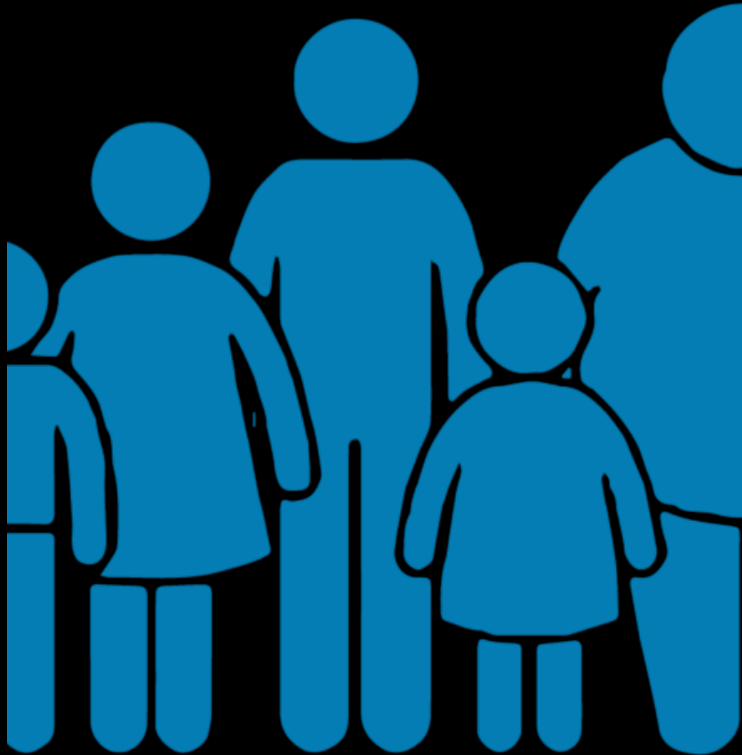


THE DAPI DIFFERENCE



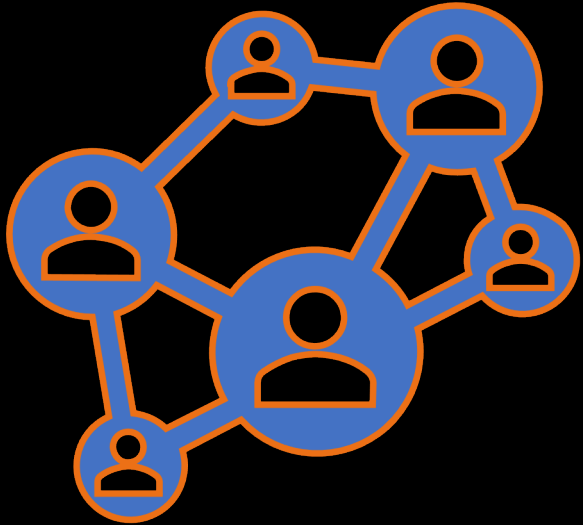
- ▶ College and Career Readiness
- ▶ SAT Preparation – Starting 2022-2023
- ▶ Job Preparation
- ▶ Social Services Needs
- ▶ Life Plan Development
- ▶ Goal Planning
- ▶ Resources
- ▶ Transition to Outreach program upon completion of traditional program
- ▶ Ongoing support for Alumni

FAMILY CONNECTION (FAMCO)



- ▶ FamCo is an extension of outreach services provided by DAPI to at-risk youth, pregnant, or parenting students and their families. It is preparation for college/career services, housing education, financial literacy, relationship values, and other related topics.

THE DAPI DIFFERENCE THROUGH FAMCO



- ▶ We touch fragile families who have not attend DAPI.
- ▶ We offer cultural sensitivity in our interactions.
- ▶ We welcome young women and young men into our groups.
- ▶ We offer real-life discussions with our materials.
- ▶ Participants are guaranteed a “no judgement zone” experience.

COMMUNITY PARTNERS



McCullough
Middle School



DAPI MENTORING PROGRAM

Young mothers
thrive when they
are connected to
empowering adults.





Provide a mentor for
each student



Goal setting for
Career and College
readiness



Build positive and
trusting relationships



Help Mentees
identify what they
want to accomplish

MENTORING PROGRAM GOALS

WHEN YOU MENTOR YOU...



This Photo by Unknown Author is licensed under [CC BY-NC](#)

- ▶ Strengthen young families to move in positive directions.
- ▶ Provide guidance and inspiration in a trusting environment.
- ▶ Encourage a young mother to remain in school, develop college and career goals while pointing in the direction of self-sufficiency.

THANK YOU

Q & A

